

REALFi[®]
REAL ESTATE
For Instant Answers Call 888 - **REALFi** - 1

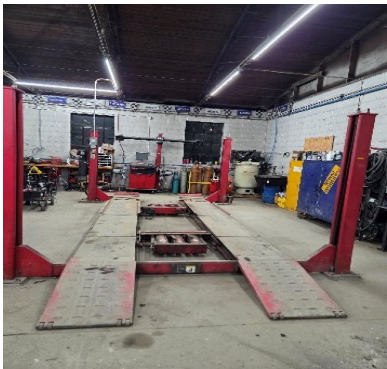
Chuck Gottlieb
Office: 248-886-0000 Cell: 248-467-4900
chuckg@REALFi.com

Tools & Equipment Inventory

Included in the sale: \$60,000+ in shop tools and equipment

Featured Equipment

Alignment, Lifts & Heavy Handling



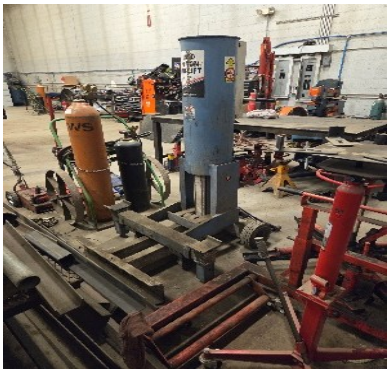
Hunter front-end alignment machine

In-house wheel alignment capability — a revenue line most independent shops cannot offer.



100-ton pneumatic press

Heavy-duty bearing, bushing, and pin work.



10-ton air lift

Heavy-vehicle service.



Heavy-duty transmission jack



Hoist-type transmission jacks



Three floor jacks, 10-ton air jack & torch cart



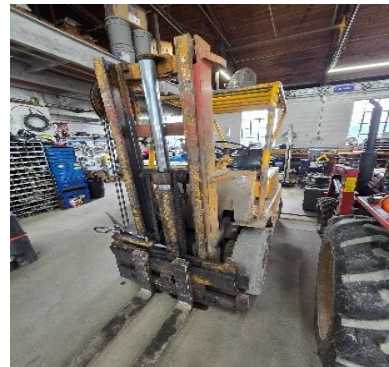
Jack stands — six large, nine small, transmission jack



Three hoist jack stands



Wheel dolly for dual wheels



Fork truck

In-shop material handling.



Fork truck — additional view

Welding, Cutting & Fabrication



Lincoln 180C wire-feed welder with cart



Millermatic wire welder with cart



Plasma cutter



Gates hose crimper & fittings
On-site hydraulic hose fabrication — strong margin line.



Chop saw (cold cut)



Table saw



1/2-inch drill press

Diesel Diagnostics & Engine Tools



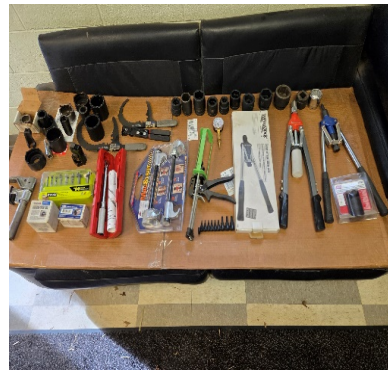
Snap-On Solus scan tool with heavy-duty programs



Prolink Altra laptop — 10 major-brand engine programs



Diesel engine compression adaptor kit



Injector cup installation tool



Injector adaptor kit for compression testing



Pressure gauges



Cooling system pressure test kit



Digital load cell

Air, Fluid & HVAC Systems



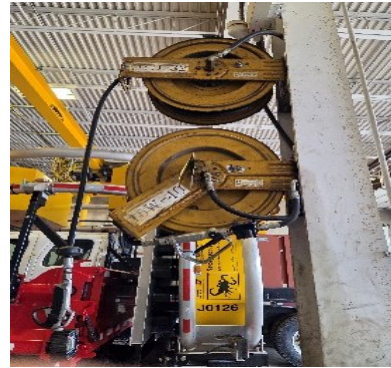
Ingersoll Rand air compressor
Compressed air plumbed throughout shop.



Bulk oil system — plumbed throughout shop
Digital counter meters on every hose.



Bulk oil system



Bulk oil system — view 2



Bulk oil system — view 3



Pressure washer, Shop Vac & two R134a AC machines



Pressure washer & Shop Vac



Oil drain tank & large fan



Porta power kit



Porta power kit, large battery charger (x2)

Power Tools, Drilling & Small Equipment



Magnet drill



Trailer light tester



Filter wrenches



Nut & bolt bins — standard and metric, course and fine

Shop Infrastructure & Storage



Large cabinet (blue) & fire-proof cabinet (yellow)



Two large shop fans



Ladders



Furniture, shelving, file cabinets, slat-wall accessories & display

Additional Tools & Specialty Equipment

- Storm ¾-inch torque wrench
- Pressure bleed adaptor kit
- ATC DEF tester
- Battery crimper & puller
- Ball joint pullers (x2)
- DT rear main seal installer
- Electric drill
- Small cooling system adapt kit
- Tie rod press
- Hydraulic flaring kit
- Gas engine compression tester
- Diesel engine compression tester
- Three-arm puller kit
- 6.7 injector puller
- Paint gun
- Sander
- UV light & dye
- Rivet gun
- Battery cable crimper
- Battery angle drill & charger
- Air nozzles
- Gas engine piston ring kit
- Dremel kit
- 600-amp Snap-On battery tester
- ATC battery tester
- Paint gun (second)
- Vacuum bleeder kit
- O-ring making kit
- Tire plug kit
- Pressure test kit
- Hammer drill bits
- 6.7 fuel line sockets
- King pin reamer
- Wire brush kit — injector cup
- Front and rear crank seal installers
- Fan clutch wrench
- Axle nut socket set
- Filter wrenches
- Thread chaser
- Ryobi Forstner bit set
- Inch-pound torque wrench
- Strut compressor tool
- Large metric impact sockets
- Three rivet guns
- Combustion leak detector
- Pressure gauges and hoses
- Electronic leak detector (AC)
- Flare kit
- Clamp-on dial indicator
- Injector sleeve installer
- Puller kit
- 7-inch polisher
- Reamer kit
- Tie rod press
- Pressure tester — cooling system
- 8-inch grinder
- Puller — 3-jaw
- Hydraulic flaring kit
- 6.7 injector puller
- Injector cup cleaner kit
- Diesel engine compression test kit / oil PSI tester
- Dual-wheel separator
- Gas engine compression tester

Notes & Exclusions

All tool counts and descriptions are broker-provided and subject to final confirmation during due diligence. All personal property must be itemized in the purchase agreement to be part of the sale.